



HAWAI'I 2023

with Austin Jenkins

ETV Endowment of South Carolina

June 5-15, 2023



DAY ONE - Monday, June 5

Arrive at Honolulu International Airport. Meet your Tour Director, Sally Lane, at baggage claim to collect your belongings before boarding your deluxe chartered motor coach and heading to your oceanfront hotel in Waikiki, The Twin Fin Waikiki, your home for the next six nights. Upon arrival at your hotel, learn the meaning of "Aloha" and experience a traditional fresh flower lei greeting. Check into your room before meeting the rest of your group at a casual Mai Tai Welcome Reception, which will include drinks and a light dinner. If you'd like to stretch your legs after your long travel day, consider taking a stroll with Austin along the waterfront and through Kapi'olani Regional Park - one of the largest and oldest public parks on Oahu. Located right across the street from the park is the Waikiki Marine Life Conservation area where you can walk along the Queen's Walkway into the ocean to catch stunning views of the sunset.

Meals Included: D

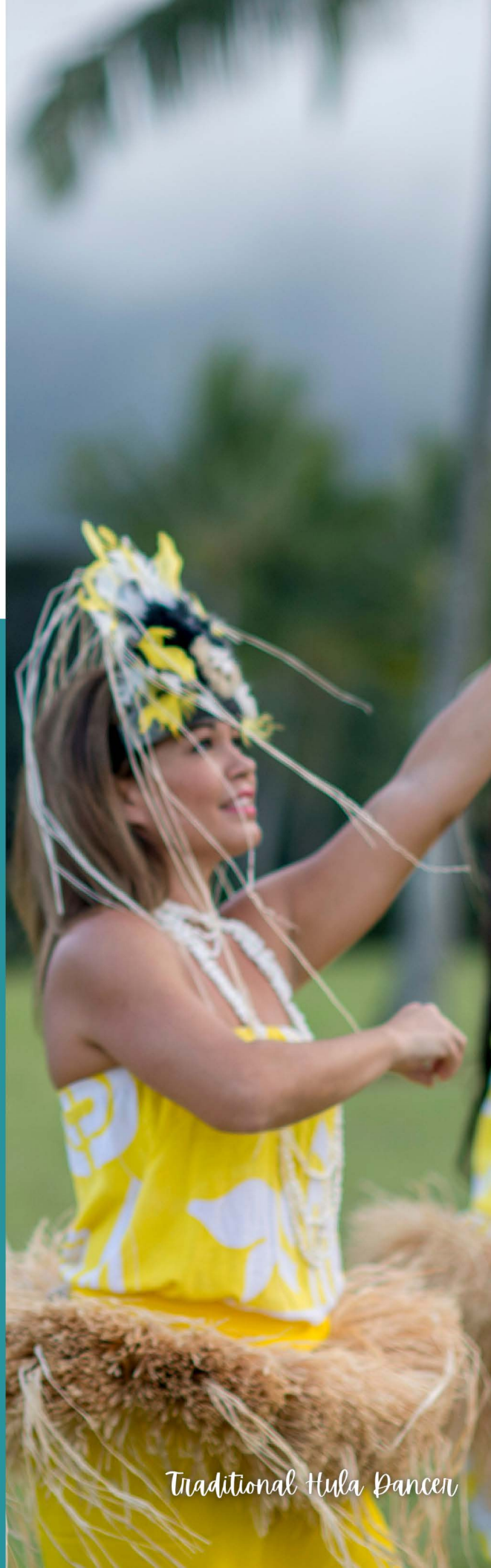
DAY TWO - Tuesday, June 6

Enjoy a buffet breakfast at the Coconut Club in your hotel this morning before meeting your local guide to experience the vibrant Waikiki neighborhood on a walking tour. Once a retreat for Hawaiian royalty, Waikiki is a gathering place for all walks of life, with scores of shops and restaurants and lively entertainment, all within walking distance from your hotel.

Board your motor coach to head up to Pu'u Ualakaa State Park. Here, Austin will guide you on a walk along a loop trail through a forest that has sprouted on a cinder cone and experience Hawai'i's flora and fauna firsthand. Gather for a private picnic lunch with the rest of the group to spend time getting to know each other better while enjoying a panoramic view of Diamond Head crater and the Honolulu skyline.

The fun doesn't stop there, after an afternoon in nature with your group, head down the hill to Experience Nutridge - an authentic Hawaiian Luau Show and Buffet Dinner. Nutridge is the home of Hawai'i's first macadamia nut harvest. See, smell, touch, taste, hear and experience a special part of Hawai'i's history at the beautiful Pu'u Ualaka'a - Nutridge Estate. The Estate has hosted many iconic guests including Clark Gable, Marilyn Monroe, Charlie Chaplin, and was one of Elvis Presley's favorite hang outs on O'ahu. This intimate luau offers the feel of an ohana gathering, and no family party is complete without delicious Hawaiian cuisine, prepared fresh from a farm-to-table buffet as well as live hula entertainment.

Meals Included: B,L,D



Traditional Hula Dancer



DAY THREE - Wednesday, June 7

Enjoy breakfast at your hotel prior to boarding your deluxe motor coach to the Pearl Harbor Historical Sites. Tour the Pearl Harbor Visitor Center and Museum Exhibits: Road to War and Attack. Climb aboard the USS Bowfin and take in the displays in the Submarine Museum and Park. Enjoy a plate lunch - a local favorite referring to a meal consisting of rice, macaroni or green salad and an entree such as chicken katsu or kalua pork in a semi-private area at Restaurant 604 in the Pearl Harbor complex.

En route to Waikiki, enjoy a narrated Honolulu Highlights City Tour Featuring historic Hawaiian landmarks such as 'Iolani Palace, the Hawai'i State Capitol Building, King Kamehameha Statue and more. Enjoy dinner at a local restaurant.

Meals Included: B,L,D

DAY FOUR - Thursday, June 8

Enjoy breakfast at the Coconut Club in your hotel and board your deluxe transportation to embark on your Central Oahu and North Shore Tour. Learn how heirloom varieties of native Hawaiian sugarcane are being cultivated and distilled at Ko Hana Rum Farm. Finish your tour with a rum tasting.

Haleiwa is your next stop. This historical place retains much of the old style of Hawai'i and offers a variety of restaurants, surf shops, clothing stores and the famous "shave ice" stands. You will stop in the heart of the town, where many restaurants are easily accessible. Lunch is on your own.

After lunch, continue your journey along the world-famous North Shore where surfing daredevils gather from around the world to compete in riding the monster waves that are often taller than most buildings. Sunset Beach is the local favorite and is legendary for its 20-foot waves. The North Shore is also the home of the famous Banzai Pipeline. "Banzai" is used as a toast or a battle cry meaning "go for it". In the 1950s a surfer yelled, "Banzai" as he rode a massive wave, and the word has lived on. When the ocean hits the shallow coral shelf offshore, a wave forms that is so steep that it rolls and makes a nearly perfect tube or pipeline. It is the holy grail of surf challenges.

Take a guided nature walk with Austin and your local guide through the sacred Waimea Valley. Learn about the ahupua'a system, listen to the history of Waimea, see rare Native Hawaiian plants and animals, discover Kau Hale (the traditional Hawaiian living site) and other significant cultural sites, explore Kamanui Stream, experience a Hawaiian game site and spend some time enjoying the beauty of the picturesque waterfall. Enjoy dinner at a local restaurant.

Meals Included: B,D

DAY FIVE - Friday, June 9

Enjoy breakfast in the Coconut Club at your hotel and free time this morning in Waikiki. Enjoy lunch at a local restaurant before continuing your journey along the South Shore of Oahu. You'll stop at Halona Blowhole, one of Hawaii's natural wonders, before hiking with Austin to the Makapu'u Lighthouse. The trail is known for its hot and dry conditions as well as stunning views of the southeastern coastline and sea-faring wildlife.

From desert-like climates to the rainforest - you'll continue back to Waikiki through the Nu'uuanu Pali. This is the site of the Battle of Nu'uuanu, one of the bloodiest battles in Hawaiian history, in which Kamehameha I conquered the island of O'ahu, bringing it under his rule. The Nu'uuanu Pali State Wayside is a lookout above the tunnels where visitors are treated to a panoramic view of O'ahu's windward side of the island. It is also well known for strong trade winds that blow through the pass forming a sort of natural wind tunnel. Enjoy a sunset picnic dinner at Queen's Surf Beach.

Meals Included: B,L,D

Makapu'u Lighthouse



Diamond Head Crater



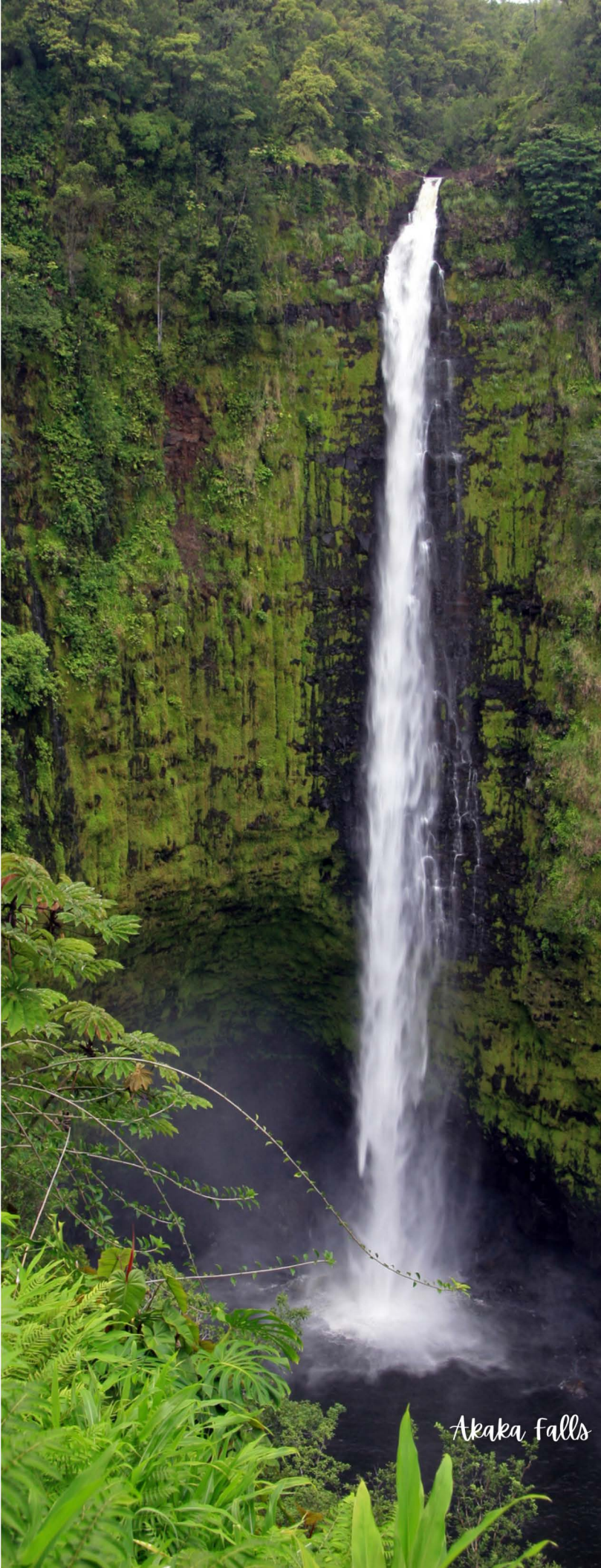
DAY SIX - Saturday, June 10

Breakfast will be in the Coconut Club at your hotel. Get ready for a great day because we are hiking with Austin around Diamond Head Crater! Bring your camera for a fantastic view of the southeast coast! Below, we'll see the lighthouse, coral reefs, sailboats and even surfers on the waves at Diamond Head Beach!

Enjoy your afternoon at leisure. Suggested activities to enjoy on your own:

- The Honolulu Zoo, the only zoo in the United States that originated in a King's grant of royal lands to the people. Relax with sloths, see the state bird of Hawaii, the Nene goose or look over the African Savanna, right across the street from Waikiki Beach!
- The Waikiki Aquarium, the second oldest public aquarium in the United States. View the underwater exhibits, learn about conservation efforts and even see the Native Hawaiian Monk Seal!
- Relax on Waikiki Beach! You can reserve beach chairs, floaties and even stand-up paddle boards right at the hotel.
- This is also a great time to snorkel!

Meals Included: B



Akaka Falls

DAY SEVEN - Sunday, June 11

Enjoy your last breakfast in Waikiki before checking out of your hotel and taking an inter-island flight from Honolulu International Airport to Hilo International Airport (ITO) on the Island of Hawai'i. Hilo is known for its "old Hawai'i," small-town feel and plentiful rainfall. Upon arrival, you'll head to the Hilo Farmers Market where you'll have the opportunity to sample fresh, locally-grown produce and grab some lunch while exploring the downtown area. Lunch is on your own.

Heading just ten minutes outside of Hilo, you'll reach your next destination: the Lavaloha Chocolate Farm, which produces 100% Hawaiian grown chocolate. Next, enjoy a 0.4 mile loop walk with Austin through lush rainforest and tropical vegetation to view Akaka Falls. Continue driving along the rainforest on Hawai'i Island's northeast coast, known as Hamakua. Stop in Paniolo (Hawaiian cowboy) country for dinner at a local restaurant before returning to Hilo via Daniel K. Inouye Highway, which is sandwiched between the two largest volcanoes on Earth - Mauna Kea and Mauna Loa, to check into your ocean front hotel for the next two nights, the Grand Naniloa.

Meals Included: B,D

DAY EIGHT - Monday, June 12

Breakfast will be at your hotel, in Hilo, this morning. Then you'll board your deluxe motor coach and head to Hawai'i Volcanoes National Park. Enjoy a walk with Austin alongside sulfur banks and the steaming bluffs to the Kilauea Caldera overlook, where you may see an active eruption. Listen to native bird song before walking through Nahuku (Thurston Lava Tube).

Enjoy a picnic lunch along Chain of Craters Road, where you'll be able to walk on past lava flows, view one of the most extensive fields of ancient Hawaii petroglyphs and see the Holei Sea Arch. Return to Hilo for dinner at a local restaurant.

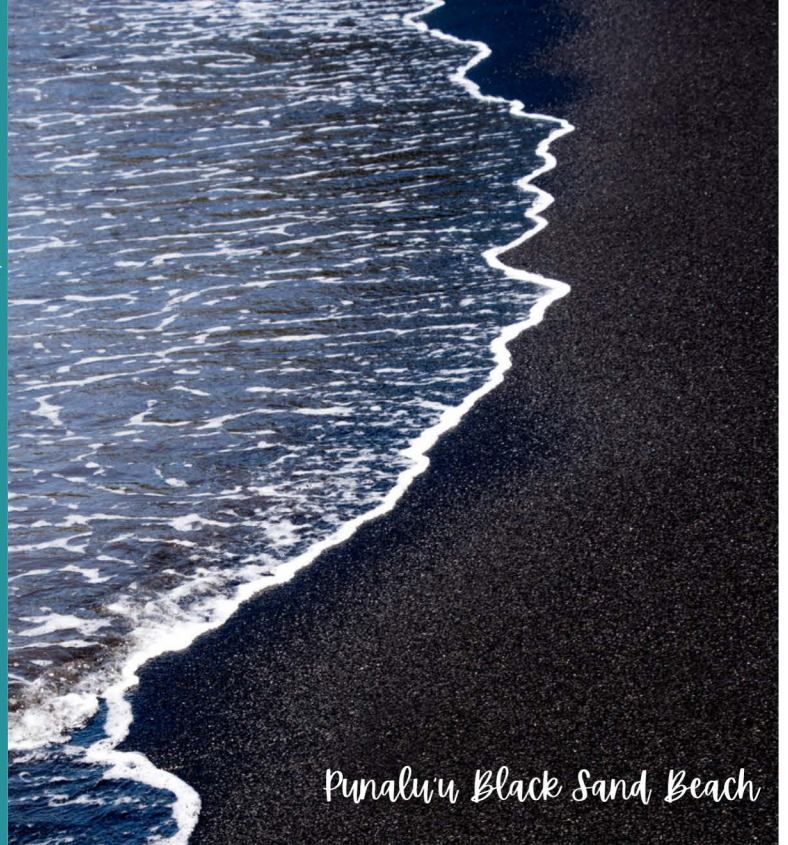
Meals Included: B,I,D

DAY NINE - Tuesday, June 13

Enjoy breakfast at your hotel before checking out and making your way to the west side of the island. You will be heading south on your journey, through a rainforest that will transform into barren lava fields and desert. Along the way you'll stop at Punalu'u Black Sand Beach for a BBQ picnic lunch, where you're likely to see Hawaiian Green Sea Turtles basking on the coarse black sand. Visit Punalu'u Bakery - the southernmost bakery in the United States - for some tasty treats.

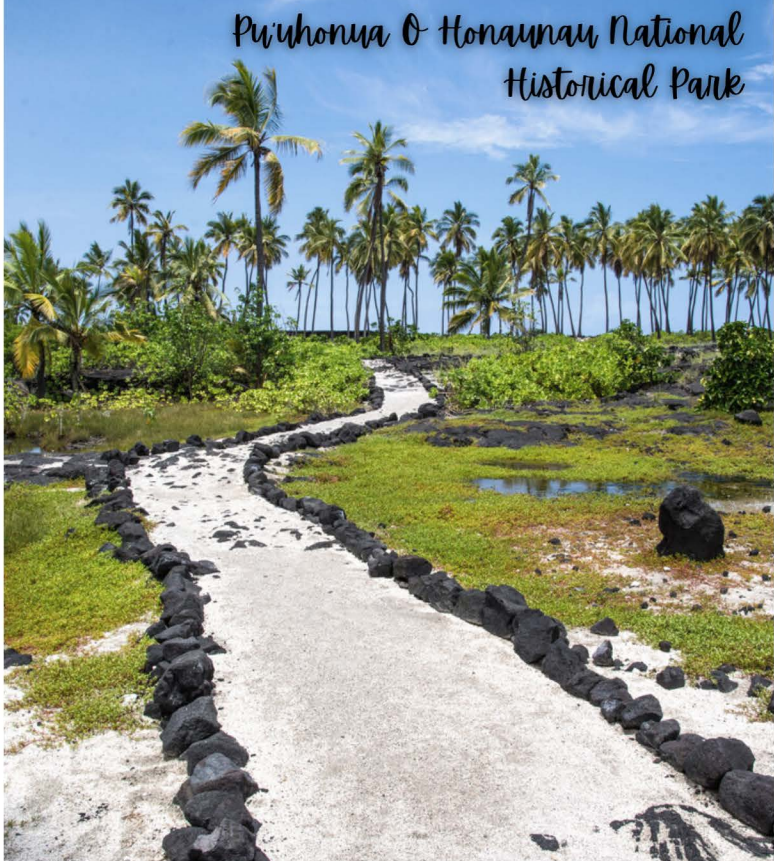
Check-in to your ocean front hotel for the next two nights, the Royal Kona, in Kailua-Kona - a seaside town on the "dry side" of the island before enjoying dinner at a local restaurant.

Meals Included: B,L,D



Punalu'u Black Sand Beach

Pu'uhoonua O Honaunau National Historical Park



DAY TEN - Wednesday, June 14

Enjoy breakfast at your hotel while listening to the waves crash against the lava rock. Board your motor coach to a working Kona coffee plantation where you'll learn what goes into this liquid gold and get to sample some of the best that Hawai'i has to offer.

After the coffee plantation tour, you will visit Pu'uhoonua O Honaunau National Historical Park, which is more commonly known as "Place of Refuge." Explore ancient Hawaiian royal grounds, and learn about the Kapu system (religious law) while taking a walking tour over crushed coral sands and lava rock. Enjoy a late Farewell Lunch at a local restaurant.

Depart in the early evening to enjoy a manta ray night snorkel where you'll swim up close and personal with these gentle giants.

Meals Included: B,L

DAY ELEVEN - Thursday, June 15

Enjoy your last breakfast and morning walk with Austin in Hawai'i. Take some leisure time to explore Kailua-Kona and the attractions along Ali'i Drive before checking out of your hotel and heading to Kona International Airport (KOA). We recommend departing on a late afternoon/evening flight.

Meals Included: B

ABOUT YOUR GUIDES



AUSTIN JENKINS is a native of Camden, SC. He received his undergraduate degree studying biology at The Citadel and graduate degrees from Clemson University studying various organisms. He is an instructor for the popular SC Master Naturalist Program through Clemson Extension and the SC Wildlife Federation, where he is a former chair and emeritus board member. Jenkins was the first executive director of the Katawba Valley Land Trust. For the past 12 years, Jenkins has taught at USC Sumter. His awards there include the Hugh Stoddard Outstanding Faculty Award, the Student Government Teacher of the Year Award and the Distinguished Teacher of the Year Award. His purpose is to help people connect with nature.



SALLY LANE has directed ETV Endowment trips for more than 20 years and has been involved in all aspects of the tourism industry since the early 1990s, from being an operations manager to escorting tour groups around the United States and abroad. She successfully ran two of New Mexico's largest destination management companies for more than two decades, but her greatest love has always been being a top-notch tour guide. Sally lives by the motto "give them service and take it a step beyond."

PRICE PER PERSON:

Double Occupancy: \$7,099.00

Single Supplement: \$1,580.00

Price Includes:

- \$750 tax-deductible donation to the ETV Endowment
- Deluxe motorcoach transportation
- One-way inter-island airfare between Honolulu and Hilo
- Local tour director
- Expert guidance with Austin Jenkins
- Services of tour director, Sally Lane
- Ten nights oceanfront hotel accommodations (six nights at Twin Fin Waikiki, two nights at the Grand Naniloa and two nights at the Royal Kiona)
- Ten breakfasts, six lunches, eight dinners
- All gratuities and applicable taxes
- Baggage handling for one piece of luggage
- Round trip airport transfers

Airfare to/from Hawai'i is not included.

PLEASE NOTE: You should plan to arrive at Honolulu International Airport and depart from Kona International Airport. Do not book airfare until instructed to do so by the ETV Endowment.

